



Oregon Trail School District

2008 Bond Election

*\$114.9 million to build a new high school
and improve other district schools*



Three failed attempts

□ 1995

□ 1997

□ 1998

Rethinking our process...



Three stages of community engagement

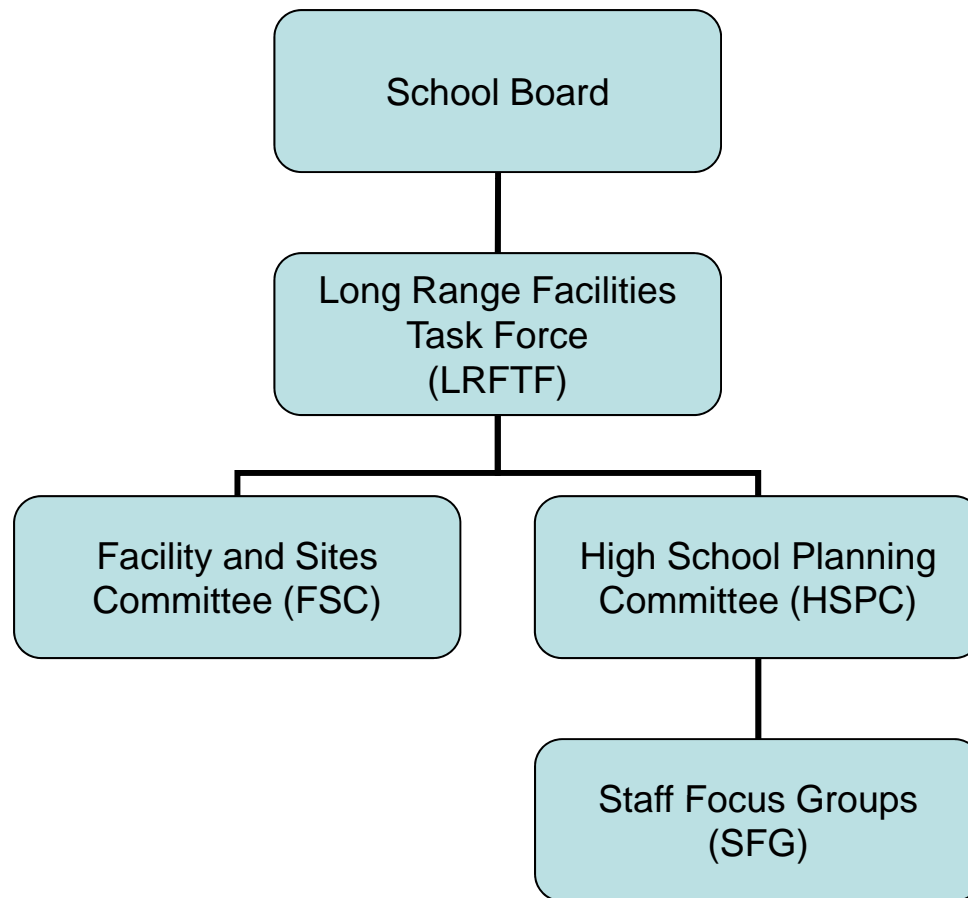
- Identifying facility needs
 - High School Facility Task Force
 - Long-Range Facility Task Force
 - Facility & Sites Subcommittee
- Implementing a bond campaign
 - PAC
 - School Teams
- Designing a new high school
 - High School Planning Subcommittee
 - Staff Focus Groups



High School Facility Task Force

- ❑ Cross section of the community and staff
- ❑ Charge: review, validate, and document the need for a new high school.
- ❑ 1st meeting: September 2006
- ❑ Recommendation to the Board:
January 2007

Community Led/Community Based Process





Long-Range Facilities Task Force

- Original FTF members and additional community members

Charge:

- Oversee the entire planning process for new high school design and other facility priorities
- Delegate members to sit on Facilities & Sites Subcommittee and High School Planning Subcommittee



High School Visioning Summit

- September 8, 2007
- Guiding principles



High School Planning Subcommittee

- High school and district staff; LRFTF members
- Held design workshops
- Charge:
 - Direct development of conceptual design of new high school



Facility & Sites Subcommittee

- School principal & parent from each school;
Facilities Director
- 3 meetings; 1 per community
- Reviewed:
 - Facility Assessment Report
 - Parent Surveys
 - Technology Needs
 - Demographic Projections
 - Existing High School Uses/Opportunities

Reported to Long-Range Facilities Task Force



Long Range Facilities Task Force Preliminary Recommendation to Board

- 0-5 Year Needs
- Potential opportunities and uses for the existing high school facility
- Other facilities and site needs: over 400 projects identified!
- New high school conceptual design



Community Forums

- Three informal community forums: Feb. 2008
 - Shared FTF findings
 - Performed pre/post surveys
 - Posters; handouts
 - FTF members to answer questions



School Bond Teams

- Principal, school captain, PTC
 - Began work in October 2007
 - Voter registration drive
 - School communications: displays, letters, etc.
 - Kindergarten round-up: spring
 - Recruitment of school volunteers
 - Information at sports events



VOTE: Value Oregon Trail Education

- Facility Task Force members continued their grass roots efforts
- PAC formed in March 2008



High School Design Summits

- April 8 and 4/15, 2009
- June 10, 2009
- October 13, 2009



Focus Groups

- Representatives from each high school department; school administration; LRFTF members; High School Planning Committee members.
- Met from spring – fall 2009; over 40 meetings
- Identified organizational characteristics and space needs of a new high school.
- Reported to the High School Planning Subcommittee.



High School Design

- Open House events, November 2009
 - View plans
 - Share input
 - Complete survey

Groundbreaking event: July 2010



Construction site: December 2010



Sandy High School
Opening: Fall 2012



Future Sandy High graduates!

